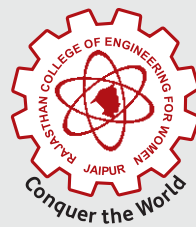
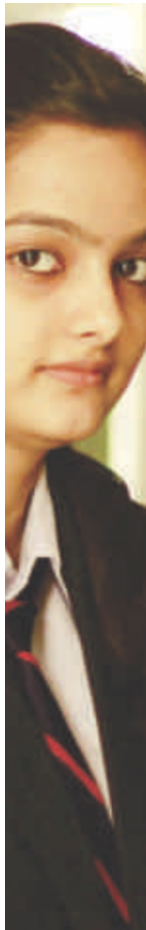


Information Brochure



Established: 2002

RCEW
Conquer the World...

RAJASTHAN COLLEGE OF
ENGINEERING FOR WOMEN
Approved by AICTE, New Delhi & Affiliated to RTU, Kota

About RCEW

With the blessings of "Amma Chandrawati", Chandrawati Education Society(CES) since 2000 has an aim of providing quality technical education. The society established its first women institute as Rajasthan College of Engineering for Women (RCEW) in the year 2002 with a vision to impart futuristic technical and management education to serve the nation with a most proficient flux of engineers and management professionals.

RCEW strikes to cultivate students who are not only successful in their personal and professional lives but who take upon themselves the challenge to fetch science and technology to the door steps of the common man.

Palak Arora
CSE IVth Year

As a student it not only guarantees me technical education but also provides me with the strength to showcase my talent in the field of sports and extra-curricular activities.

Nupur Moore
EE IIInd Year

"With excellent infrastructure and able management, the institute is going to have a bright future."

Prof. R.P. Yadav
Former Vice Chancellor,
RTU Kota

"Energy & Enthusiasm is exemplary as their achievements. All the best to all new entrants joining this esteemed institute."

Dr. A.P.J Abdul Kalam
Former President of India

"The RCEW has good infrastructure & they are organizing useful events for the students."

Dr. Jitendra Singh
Former Minister Energy,
IT & Higher Education, Rajasthan

"Highly educative and enriching experience. A sprawling campus & very impressive infrastructure. An ideal institution for technical education & empowerment of women."

- Dr. Aynur Unal, UK
Prof. Ansal University

Words of Eminence



{Index}

01

Vision & Mission

02

Forewords

03

Why Choose Us?

04

Honored to be Recognized
& Campus Retreat

05

Courses Offered, Fee Structure
& Scholarships

06

Doctoral Programme &
Post Graduate Programmes

07

Under Graduate Programmes

08

Under Graduate Programmes

09

Training & Placement Cell

10

Our Torch Bearers





To establish a world class platform for creation, dissemination and application of knowledge in the field of engineering & management through quality study, research, pedagogy and consultation. The college is built on its traditions of innovation, problem solving and interdisciplinary collaboration to meet the changing needs of the society at large & industry in particular.

Vision

Amma Chandrawati has been a Constant Source of Inspiration in the establishment and success of our educational society. The management, members of faculty, staff, students and all the members of ever growing RCEW family fondly remember her as a true beacon in attaining an elite position in the field of higher technical education.

"Your words are true Inspiration,
Your Deeds are acts of faith and
your life is an example to emulate".

Our Inspiration

To create skilled manpower for meeting the current and future demands of the Industry. To recognize education and research in close interaction with the Industry, society and emphasis on the development of leadership qualities in the students entering the portals of the institute with sensitivity to social development and an eye for opportunities for growth in the international perspective.

Mission

Forewords

"Wisdom is learning what to overlook."

I am delighted that in a span of year after year, RCEW has become destination of choice for aspiring engineers throughout India. RCEW is committed to enhance capabilities and potential of human resources with the objective of transforming them into leaders in their chosen interest. I am confident that with the concerted efforts of the management, faculty, staff and students, RCEW will scale new heights of excellence in the near future.

Beena Singh



Chairperson

"Learning is a treasure that will follow its owner everywhere."

Dear Aspiring Students,

It gives me immense pleasure in putting forth brief replica of aims, objective, environment, infrastructure, facilities, faculty members and campus of our institution through these pages. The management epitomizes striving for excellence, reaching out to the stars, but remaining grounded to the reality. We have tried to plan meticulously and provide world class infrastructure to give the best education to our students. Best wishes to all for a bright future.

Dr. Jitendra Singh



Chairman

The sole aim of Training & Placement Cell is to make RCEW the centre of excellence in the region and nodal centre for the placement activities in this part of the country and beyond. With an increasing thrust being placed on Institute-Industry Interaction, it is my sincere belief that RCEW, Jaipur stand to gain immensely from this symbiotic relationship.

Our Institute holds the pride of place being pioneers in the field of engineering and technical education. We have been continuously ranked among the elite by our peers and our constant pursuit of excellence has made our institute a focal point in technical education for students and faculty members alike. At RCEW, we take care to groom our students according to the needs of the industry. Our aim is to actively assist students in identifying the individuals as best suited to company needs and in developing a successful recruitment relationship.

Arihant khicha



Training
Placement Officer

Why Choose Us?

1. 100% placement Assistance
2. Well Qualified & Experienced Faculty Members
3. Well-Equipped Modern Laboratories
4. More than 30,000 Books, Journals & References etc.
5. Digital library with IEEE & Springer online facilities.
6. Mandatory Internships & training programmes.
7. Software Development , Entrepreneurship Development & R & D Cell
8. Campus Recruitment Training Programme through Professional Trainers
9. Frequent Iconic Campus & Industrial Visits for Motivating Students
10. Various Technical & Cultural Clubs
11. A Home away from Home' Air Cooled & Fully Secured Residential Facility.
12. Hygienic & Nutritious Food

13. Automated Laundry Services
14. Luxurious Guest House for parents & eminent guests.
15. Café Coffee Day & Cafeteria for refreshment
16. Indoor as well as Outdoor Sports Facilities
17. Well Equipped Gymnasium for Health & Fitness
18. Wi-Fi Campus with High Speed Ethernet LAN (24x7)
19. Best Transportation through a Fleet of Buses
20. Spacious Seminar Halls and Conference Rooms
21. Basic Medical facility & availability of ambulance(24*7)
22. Over 4000 Alumni serving the Nation & abroad in Public, Private, Government Sector & Armed Forces.
23. Time to Time National & International Exposure through technical exhibitions, seminars, conferences & workshops.
24. Anti Ragging Cell, Women cell with a perfect blend of expert counselors.

Why RCEW ?



Honored to be Recognized.....

Awards & Achievements :

- All India Achievers Award for Excellence
- Dainik Bhaskar Education Leadership Award
- Rajasthan Energy Conservation Award
- Young Achievers Award, IBS, Hyderabad
- Jaipur RCEW Vidushi Award



Membership with Academic & Technical Associations

- CISCO Academy
- Oracle IT Academy
- Tie Up with Ericsson for Training & Placement
- CSI, IEEE, ISTE & NSS (Institutional Membership)
- CSI & ISTE (Faculty Chapter)
- ISTE & IEEE (Student Chapter)
- Microsoft Campus Agreement

Campus Retreat



Courses Offered

Course	Duration	Intake
Research Programme		
Ph.D. in Computer Application	03-05 Years	
Post Graduate Courses		
M.TECH	02 Years	
• Digital Communication		18
• Computer Science & Engineering		18
• Power Systems		18
MCA	03 Years	60
MBA	02 Years	60
• Marketing		
• Finance		
• Human Resources		
Under Graduate Courses		
B.TECH	04 Years	
Computer Science & Engineering		120
Electronics & Communication Engineering		120
Electrical Engineering		120
Civil Engineering		60

Fee Structure

Course Fee

In compliance with the policy of Government of Rajasthan, the fee for different programmes during session 2017-18 is as under

Course	Tuition Fee (Per Annum)	Caution Money (One Time only)
M.Tech	₹ 77000*/-	₹ 7500*/-
B. Tech	₹ 77,000*/-	₹ 7500*/-
MCA	₹ 60,500*/-	₹ 7500*/-
MBA	₹ 60,500*/-	₹ 7500*/-

*** Subject to change as per the direction of Directorate, Technical Education, Rajasthan.**

Hostel Fee

Single Seater	Rs. 88,000/-	
Single Seater (Air Conditioned)	Rs. 94,500/- +	Electricity Bill
Single Seater (AC & Attached Toilet)	Rs. 1,10,000/- +	Electricity Bill
Double Seater (AC & Attached Toilet)	Rs. 94,500/- +	Electricity Bill
Double Seater (Attached Toilet)	Rs. 79,500/-	
Double Seater	Rs. 72,500/-	
Triple Seater	Rs. 65,000/-	
Triple Seater (Attached Toilet)	Rs. 68,000/-	
Hostel Security (One time – Refundable)	Rs. 3000/-	

Amma Chandrawati Scholarship Scheme (semester wise)

90% & Above	Rebate of 100% in Tuition Fee
85 % to 89.99%	Rebate of 75% in Tuition Fee
80% to 84.99%	Rebate of 50% in Tuition Fee

Doctoral Programme

In the year 2013, RCEW got the approval of a Research centre, recognized and affiliated to the Rajasthan Technical University, Kota, for Ph.D Programme.

The department is empowered by several Government bodies for research and innovation development such as : AICTE, New Delhi, Council of Scientific & Industrial Research, Indian National Science Academy, Indian Society for Technical Education, MNRE, Govt. of India and many more.



M.Tech

Master of Technology

- Computer Science & Engineering
- Power Systems
- Digital Communication

Master of Technology is 2-year (IV semester programme). The applicants should have a B.Tech. or equivalent degree and must possess a valid GATE score and the student having professional qualifications recognized by AICTE, like AMIE are also eligible to apply. Since 2009 we have three specialized branches of M.Tech. namely Computer Science Engineering, Digital Communications, Power Systems. Many students have completed their M.Tech and successfully working in various fields of Engineering & Research domains.

Postgraduate Programme



MBA

Master of Business Administration

Business is about managing change in technology, market, corporate cultures and global environment. The program is aimed at graduates who have undertaken studies and processing activities in a wide range of fields and seek to sharpen their managerial skills for the competitive world. The department offers specialized courses in Marketing, Finance and Human Resources.



MCA

Master of Computer Application

Masters of Computer Applications (MCA) is three year post graduate programme. It provides an intensive training in computer application and developing the students as computer software professionals. The MCA department at RCEW is actively functioning at par with the vital needs of industries to develop technically skilled professionals to meet the growing needs of the country.

Bachelor of Technology

- Computer Science & Engineering
- Electronics & Communication Engineering
- Electrical Engineering
- Civil Engineering

Under Graduate Programme



Department of Computer Science

Degree in Computer Science & Engineering gives the students a firm footing into intricacies of technologies such as algorithm, circuit, database, languages, Software & Computer Architecture, operating systems, simulation & modeling of networks etc. The department has advance computing labs which meet curriculum and Industry standards to promote towards research.



Department of Electrical Engineering

Electrical Engineering is concerned with the fundamental form of energy that runs over the globe. It basically deals with generation, transmission & utilization of electrical power. The Department of Electrical Engineering supports the mission of college through teaching, learning, practical exposure, research and services to the society. We prepare our students for successful interaction in public sector, private and industrial enterprises. The Electrical Engineering department at RCEW has well equipped laboratories with high quality measuring instruments and state of the art machines to offer full-fledged practical knowledge to the students. Various live projects viz namely MW Wind Solar Hybrid Power Generation System, Solar Trolley, Mini GSS, OLIN Car are made at college and industry level.



Department of Electronics & Communication Engineering

The Department of Electronics & Communication at RCEW is recognition of excellence in academic ambience infrastructure, best R & D facilities with best faculties at par from Govt. colleges. There is a great demand of expert technocrats of this field in areas like Industrial Electronics, Telecommunication and various Government sectors.



Department of Civil Engineering

The Civil Engineering Department at RCEW was established in 2013. The department aims at meeting the phenomenal demand of civil engineers in the field of infrastructure development. The Department actively promotes curriculum development activity by updating existing courses, developing new courses and preparing resource material for teaching. The Department has a number of ongoing research projects and sponsored research schemes from public and private sector organizations. It undertakes industrial consultancy works as a part of its interaction with industry and also organizes seminars/symposia for professional interaction. The Department contributes to the interdisciplinary academic and research activity of the Institute.



Department of Applied Sciences

The Department seeks to educate the students comprehensively advance analysis. Being the backbone, is enriched by the highly qualified and dedicated faculties committed not only to provide the best education methods and patterns so as to make mathematics an interesting subject, but also encourage to pursue scholarly inquiry, discovery activities and involvement in community engagement. The Department has a well-furnished laboratory with all possible apparatus, chemicals and accessories with all safety guards. Seminars, conferences and workshops are the regular features of the department. The department of physics has a well-equipped laboratory with an excellent setup for Fresnel's biprism, Polarization of laser light, half effect setup, ultrasonic velocity in liquids, etc. To face the cut throat competition, the Department of English is dedicated to provide world class proficiency, including not only the strong and impressive communication techniques, but also sound grammatical and linguistics concepts to the technocrats and management aspirants.

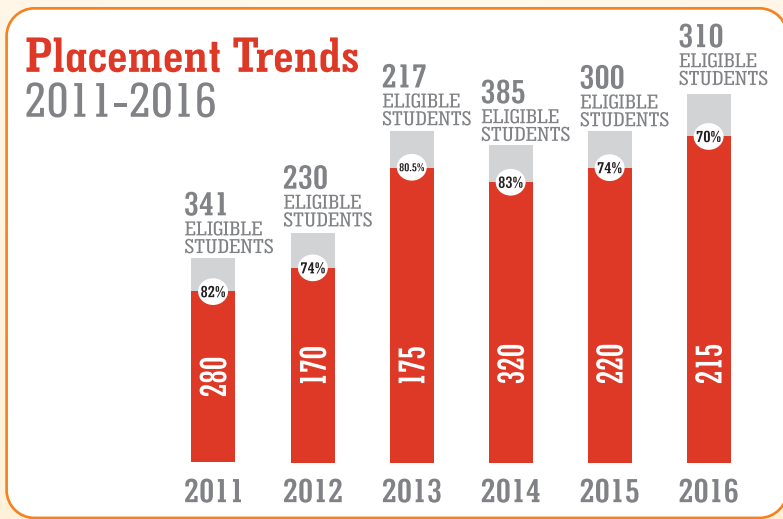
Training & Placement Cell

RCEW has set an exemplary record in engineering placements with its students being chosen by industry leaders, year after year. Its 'Stand alone Recruitment Drives', where leading organizations of the country participate to test the mettle of the students of RCEW. Owing to its consistent performance in recent years, RCEW receives top-notch companies every year exclusively for recruiting its students. It is proud that its graduates are highly rated by employers from industry in the private and public sectors. Offering information, advice, guidance and support for job-seeking students are considered a primary responsibility of RCEW.

Our Recruiters



Companies
are looking for
skilled people
Are you
Ready?

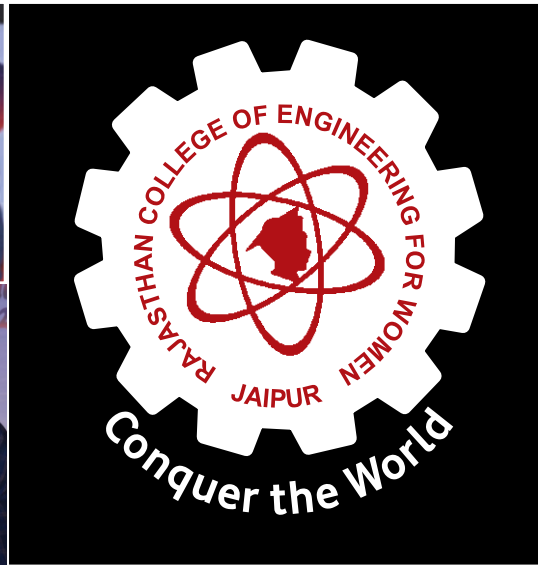


06	Microsoft (10 LPA)
04	John Deere (6 LPA)
17	HCL Technologies (4 LPA)
53	Capgemini (3.5 LPA)
42	IBM (4 LPA)
21	Genpact (3 LPA)
20	Amazon (3.5 LPA)
22	Saasfocus (4 LPA)
15	Appirio (5 LPA)
27	Q Spiders (3 LPA)
34	Blink Team (3 LPA)
17	Horizon (2.8 LPA)
20	Unitek Consulting (3 LPA)
36	Aprtron Solutions (3.2 LPA)
04	Havells (5 LPA)
25	Epitome (2.6 LPA)

Our Torch Bearers

Placement Detail of 2017 Batch*
(Till November 2016)







Anti Ragging Policy of the Institution

Institute Regulations on curbing the menace of Ragging. Ragging is a criminal offence as per the Supreme Court verdict. Ragging is an offence under section 498a of the Indian Penal Code and RGUHS Notification No. AUTH/427/2009-201 dated 01.8.2009.



"Ragging in all its forms is totally banned at RCEW including in its departments, constituent units, all its premises (academic, residential, sports and cafeteria whether located within the campus or outside and by all means of transportation of students whether public or private. The institution shall take strict action including but not limited to criminal proceeding and/or cancellation of admission against those found guilty of proof shall hereby lie on the perpetrator of alleged ragging and not on the victim. An offence of Ragging may be charged either on a written complaint by the affected or on independent finding by the Anti-Ragging Squad. The Institution is bound by the AICTE / UGC Regulations on curbing the menace of ragging in Higher Educational Institutions 2009." Depending upon the nature and gravity of the offence as established by the Anti-Ragging Committee of the Institution, the possible punishments for those found guilty of ragging shall be any one or any combination of the following :

Help Line Numbers

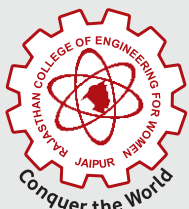
Principal	Vice Principal	TPO	Chief Proctor	Hostel Administrator	Wardens	Counselor	Examination	Police
+91-9001010888	+91-9001999088	+91-9001880055	+91-9001880099	+91-9001099958	+91-9001880088 +91-9001999081	+91-9001999089	+91-9001099909	+91-141-2250625

Our Other Institutions

- Rajasthan Institute of Engineering & Technology, Chittorgarh
- Rajasthan Dental College & Hospital, Jaipur
- Indraprastha Institute of Nursing, Jaipur
- Rajasthan Girls Polytechnic College, Baran
- Rajasthan Pharmacy College, Jaipur
- Maharaja Surajmal Industrial Training Center, Deeg
- Maharaja Surajmal Industrial Training Center, Kumher
- Beena Mahavidhyalaya, Jaipur



ISO 9001:2008



Established: 2002

RCEW

RAJASTHAN COLLEGE OF ENGINEERING FOR WOMEN

Approved by AICTE, New Delhi & Affiliated to RTU, Kota

Bhankrota, Ajmer Road, Jaipur-302026

Contact Number : 0141-2251276, Fax : 0141-2251249

Mobile: + 91- 9001099930, 9001099929, 9001999088

E-mail : admission@rcew.ac.in, rcewjaipur@rediffmail.com

Website : www.rcew.ac.in



rcewjaipur1



rcewjaipur1

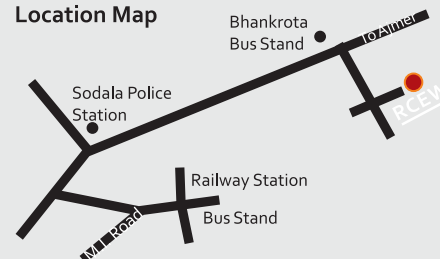


rcewjaipur1



rcewjaipur1

Location Map



RCEW 12 Kms. approx from Railway Station & Bust Stand