

88. Identify acidic oxide
 1) Cl_2O_7 2) CO_2 3) N_2O_5 4) All the above
89. Among the following which one has the highest oxidizing power
 1) $HOCl$ 2) $HClO_2$ 3) $HClO_3$ 4) $HClO_4$
90. The hybridization and number of lone pairs present around 'Xe' atom in XeF_4 is
 1) $sp^3d, 3$ 2) $sp^3d^2, 2$ 3) $sp^3d^3, 1$ 4) $sp^3, 1$

BIOLOGY

91. Which of the following taxonomic categories includes all the other categories?
 1) order 2) kingdom 3) species 4) family
92. Muscles which regulate the diameter of pupil are
 1) Ectodermal striated 2) Mesodermal striated
 3) Ectodermal unstriated 4) Mesodermal unstriated
93. Which of the following is not related to Rock weed
 1) It is a Rhodophyceae member 2) It contains chl.a and chl.c
 3) Diplontic life cycle is present 4) Two unequal lateral flagella are present
94. The following are associated with nerve fibres in Peripheral Nervous System
 A) Axolemma B) Neurilemma C) Endoneurium D) Myelin sheath
 E) Axoplasm
 The correct sequence of the above from inside to outside w.r.to the nerve fibre is
 1) E,A,B,D,C 2) E,A,D,C,B 3) E,A,C,B,D 4) E,A,D,B,C
95. How many sentences are correct related to Terror of Bengal
 i) Vegetative propagation takes place through offset
 ii) It is free floating hydrophyte
 iii) Pulvinus petiole is present
 iv) It drains CO_2 from the water
 1) All are correct 2) Three are correct 3) Two are correct 4) one is correct
96. Identify the correct statements
 A) Thyroxine can decrease rate of heart beat and cardiac output
 B) Neural signals through the sympathetic nerves can increase rate of heart beat and cardiac output
 C) Epinephrine and norepinephrine can increase rate of heart beat and cardiac output
 D) Parasympathetic neural signals can increase rate of heart beat and cardiac output
 1) A,B 2) B,C 3) C,D 4) A,D
97. Mismatch is
 1) Lycopsidea – *Selaginella* 2) Sphenopsida – *Lycopodium*
 3) Pteropsida – *Adiantum* 4) Psilopsida – (*psilotum*)
98. Choose the incorrect combinations from the following
 A) R.C.Dagar – Polyblend
 B) Kyoto protocol – Depletion of O_3
 C) Amrita Devi – Conservation of wildlife in urban areas
 D) Burning of plastics – Polychlorinated biphenyls
 1) all the above 2) A,B 3) C,D 4) A,B,C
99. Ascospores and Basidiospores produced in the following manner
 1) Endogenously, Endogenously 2) Exogenously, Endogenously
 3) Endogenously, Exogenously 4) Exogenously, Exogenously
100. Defects in ADH receptors or inability to secrete ADH cause
 1) Diabetes mellitus 2) Diabetes insipidus 3) Uremia 4) Renal Calculi
101. Pneumatophores are present in
 1) *Rhizopus* 2) *Rhizobium* 3) *Vanda* 4) *Rhizophora*

102. Match the following:

Column I

- A) J.G. Cells
 B) Hypothalamus
 C) Angiotensin II
 D) Atrial Natriuretic Factor

Column II

- i) Vasodilator
 ii) Vasoconstrictor
 iii) Vasopressin
 iv) Renin

- | A | B | C | D |
|--------|-----|-----|-----|
| 1) iv | iii | ii | i |
| 2) ii | i | iv | iii |
| 3) iii | ii | i | iv |
| 4) ii | i | iii | iv |

103. Correct match is

- | | |
|--|---|
| 1) Pinnately compound leaf – Silk cotton | 2) Alternate phyllotaxy – Mustard |
| 3) Opposite phyllotaxy – China rose | 4) Whorled phyllotaxy – <i>Calotropis</i> |

104. Identify the correct sequence of “Systemic Circulation” Pathway

- 1) Left atrium → left ventricle → pulmonary aorta → tissues → right atrium
- 2) Left ventricle → aorta → arteries → tissues → veins → right atrium
- 3) Right ventricle → pulmonary aorta → tissues → pulmonary veins → left atrium
- 4) Right atrium → left ventricle → aorta → tissues → veins → left atrium

105. In mitochondria cytochrome c attached to

- | | |
|--|--|
| 1) Outer surface of the inner membrane | 2) Outer surface of the outer membrane |
| 3) Inner surface of the inner membrane | 4) Inner surface of the outer membrane |

106. Study the following:

S_1 : Vaccines may not guarantee total protection from a disease

S_2 : Adjuvant is an agent to enhance immune response

Which statement(s) is/are correct?

- | | | | |
|-----------------------|---------------|---------------|---------|
| 1) Both S_1 & S_2 | 2) Only S_1 | 3) Only S_2 | 4) None |
|-----------------------|---------------|---------------|---------|

107. The abundant enzyme which is present in the universe is having

- | | |
|--|-------------------------------|
| a) Dual nature | b) Useful for CO_2 fixation |
| c) Can also react with O_2 in excess O_2 concentration in C_3 plants | |
| 1) Only a correct | 2) Only a & b correct |
| 3) Only a & c are correct | 4) All are correct |

108. During recovery from vigorous physical exercise, deeper breathing continues as extra O_2 is required for

- A) regeneration of oxyhemoglobin
- B) oxidation of accumulated lactic acid
- C) restoration of creatine phosphate

Choose the correct statements from the above

- | | | | |
|--------|--------|--------|------------------|
| 1) A,B | 2) A,C | 3) B,C | 4) all the above |
|--------|--------|--------|------------------|

109. How many of the plants having axile placentation

- | | | | |
|------------------|----------------------------|-------------------|------------------|
| a) <i>Pisum</i> | b) <i>Brassica</i> | c) <i>Solanum</i> | d) <i>Allium</i> |
| e) <i>Ruscus</i> | f) <i>Butea monosperma</i> | | |
| 1) 4 | 2) 5 | 3) 6 | 4) 3 |

110. Identify the mismatch:

- 1) Insulin Shock – lack of insulin
- 2) Tetany – hyposecretion of Parathormones
- 3) Cretinism – congenital hypothyroidism
- 4) Pituitary dwarf – Sexually & intellectually normal

111. Which of the following is wrongly matched in the given table

- | | | |
|----------------------------------|----------|----------------------------------|
| 1) <i>Trichoderma polysporum</i> | Bacteria | Immunosuppressive agent |
| 2) <i>Streptococcus</i> | Bacteria | Clot buster streptokinase |
| 3) <i>Monoascus purpureus</i> | Fungi | Blood cholesterol lowering agent |
| 4) Yeast | Fungi | Ethanol Production |

112. Choose the incorrect combination w.r.to 'homology'

<u>Male Reproductive System</u>	<u>Female Reproductive System</u>
---------------------------------	-----------------------------------

- | | |
|--------------------|--------------------------|
| 1. Cowper's glands | ----- Bartholin's glands |
| 2. Prostate gland | ----- Skene's gland |
| 3. Scrotum | ----- Labia majora |
| 4. Glans Penis | ----- Clitoris |

113. The experiment Semiconservative replication of DNA was discovered plant by Taylor and colleagues is not having following character.

- | | |
|--------------------------|---------------------------------------|
| 1) Nodular roots | 2) Descendingly imbricate aestivation |
| 3) Parietal placentation | 3) Non-endospermic seeds |

114. Identify the incorrect Statement about Intra-uterine Devices (IUDs)

- 1) They inhibit menstruation & Ovulation
- 2) Promote phagocytosis of sperms in the uterus
- 3) Suppress the motility of spermatozoa
- 4) make the uterus unsuitable for implantation

115. Correct match is

- | A | B |
|--------------------------------|---------------------|
| i) $^{15}\text{NH}_4\text{Cl}$ | a) Ruben |
| ii) Ribosomes | b) Calvin |
| iii) H_2O^{18} | c) Meselson & stahl |
| iv) $^{14}\text{CO}_2$ | d) George Palade |

- | | | | |
|----------|--------|---------|--------|
| 1) i – b | ii – d | iii – a | iv – c |
| 2) i – c | ii – d | iii – a | iv – b |
| 3) i – d | ii – a | iii – b | iv – c |
| 4) i – a | ii – c | iii – d | iv – b |

116. Match the following

- | | |
|---------------------------|-----------------|
| A) World Ozone Day | i) September 16 |
| B) World Population Day | ii) March 21 |
| C) World Biodiversity Day | iii) May 22 |
| D) World Forestry Day | iv) July 11 |
| | v) June 5 |

- | A | B | C | D |
|--------|-----|-----|-----|
| 1) ii | i | v | iii |
| 2) i | iii | iv | ii |
| 3) iii | ii | i | v |
| 4) i | iv | iii | ii |

117. The first animal for which a linkage map was constructed was

- | | | | |
|----------------------|--------|----------------------|-------------------------|
| 1) <i>Drosophila</i> | 2) Rat | 3) <i>Neurospora</i> | 4) <i>Pisum sativum</i> |
|----------------------|--------|----------------------|-------------------------|

118. Study the following:

- | | | | |
|---------------------|--------------------|------------------|------------|
| a) lactiferous duct | b) mammary tubules | c) mammary ducts | d) ampulla |
| e) alveoli | f) nipple | | |

Select the correct sequence form the above w.r. to milk ejection in mammary glands in human females

- | | | | |
|----------------|----------------|----------------|----------------|
| 1) e a b c d f | 2) d c a b e f | 3) e b c d a f | 4) e c b a d f |
|----------------|----------------|----------------|----------------|

119. Study the following table

Crop	Variety	Resistant
I. <i>Brassica</i>	Pusa swarnim	White rust
II. Okra	Pusa sawani	Shoot and stem borer
III. Chilli	Pusa Komal	Tobacco Mosaic Virus
IV. Flat bean	Pusa Gaurav	Bacterial blight

Identify correct pair

- 1) I & III 2) III & IV 3) II & III 4) I & II

120. Study the following statements

S_1 : Capacitation of sperms occur in the male reproductive system

S_2 : Capacitation prepare the sperms for acrosomal reaction

Choose the correct statement(s) from the above

- 1) both S_1 & S_2 2) Only S_1 3) Only S_2 4) None

121. Identify the mismatch

- 1) Zn^{+2} - Activates Carboxylases 2) Mo- Participate Nitrogen metabolism
3) K^+ - Structural element 4) Mn - Splitting of water molecule

122. select the mismatch from the following:

A) Hormone releasing IUD – Multiload 375

B) Copper releasing IUD – LNG-20

C) Steroidal oral contraceptive pill – Saheli

D) Semen isn't produced – Vasectomy

- 1) A,B,C 2) B,D 3) A,D 4) all the above

123. The year 1900 AD is highly significant for geneticists due to

- 1) Discovery of genes 2) Principles of linkage
3) Chromosome theory of heredity 4) Rediscovery of mendelism

124. Study the following periods of geological time scale, and arrange them in correct sequence

- A) Carboniferous B) Cambrian C) Silurian D) Devonian
E) Permian F) Ordovician

- 1) c d e a f b 2) e b d a f c 3) b f c d a e 4) b c f a d e

125. List I

A. Trypsin

B. Insulin

C. Toxin

D. Alkaloids

List II

i. Hormone

ii. Ricin

iii. Enzyme

iv. Codeine

Correct match is

- 1) A-III B-I C-II D-IV 2) A-IV B-I C-III D-I
3) A-II B-III C-I D-IV 4) A-I B-III C-II D-IV

126. Fossils discovered in Java in 1891 revealed which stage of human evolution?

- 1) *Homo habilis* 2) *Homo erectus*
3) *Homo neanderthalensis* 4) *Ramapithecus*

127. Common Nucleotides (nitrogen bases) which are present in both DNA and RNA

- 1) A C U 2) A G C 3) A T C 4) G C U

128. Which of the following exhibit adaptive radiation?

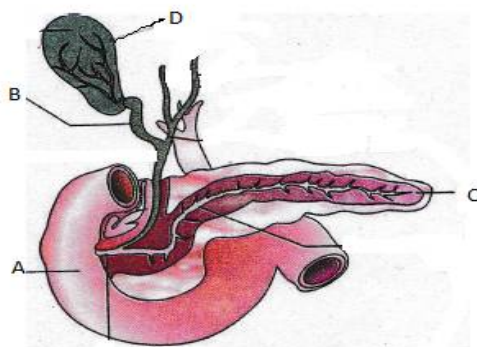
- 1) Placental mammals in Australia 2) Darwin Finches
3) Australian Marsupials 4) all the above

129. Some aminoacids are coded by more than one codon. This property of genetic code is called

- 1) Unambiguous 2) Universal 3) Degenerate 4) Specific

- 130. Study the following statements**
 S_1 : Insulin isn't taken orally, for it is a protein and is broken down before it is absorbed
 S_2 : Genetically engineered E.coli is used to produce humulin
Select the correct statement(s) from the above
 1) both S_1 & S_2 2) Only S_1 3) Only S_2 4) None
- 131. Casparian bands containing layer is absent in**
 1) Monocot stem 2) dicot root 3) Monocot root 4) Dicot stem
- 132. Polymerase Chain Reaction:**
 1) Can detect HIV
 2) Can detect very low amounts of DNA
 3) Can detect mutations in gene in suspected cancer patients
 4) All the above
- 133. Hydrophily is absent in**
 1) *Vallisneria* 2) *Hydrilla* 3) Water lily 4) *Zostera*
- 134. 'Hisardale' is an example of:**
 1) Out – Crossing 2) Cross – Breeding
 3) Out – Breeding 4) Inter – Specific hybridization
- 135. The most abundant prokaryotes helpful to humans in making curd from milk and in production of antibiotics are the ones categorized as**
 1) Cyanobacteria 2) Mycoplasmas 3) Chemoautotroph 4) Heterotrophic bacteria
- 136. In Multiple Ovulation Embryo Transfer method, fertilized eggs at which stage are transferred to surrogate mothers?**
 1) 4 -16 cells 2) 8 – 32 cells 3) 6 – 8 cells 4) 18 – 32 cells
- 137. Which statement is wrong for viruses**
 1) They contain either RNA or DNA 2) All are obligate parasites
 3) They can synthesize nucleic acid and proteins 4) All of them have helical symmetry
- 138. Match the following:**
- | Column I | | | | Column II | | | |
|----------|----|-----|----|--|--|--|--|
| A. Ig G | | | | i) Present in milk | | | |
| B. Ig A | | | | ii) Present on surface of B-Cells | | | |
| C. Ig D | | | | iii) Acts as a mediator in allergic reactions | | | |
| D. Ig E | | | | iv) Crosses placenta & provides natural passive immunity | | | |
| | A | B | C | D | | | |
| 1) | ii | i | iv | iii | | | |
| 2) | iv | i | ii | iii | | | |
| 3) | iv | ii | i | iii | | | |
| 4) | ii | iii | i | iv | | | |
- 139. Which of the biological function is not yet known**
 1) Protein synthesis 2) Photorespiration 3) Photosynthesis 4) Respiration
- 140. Trachea contains ----- epithelium**
 1) Ciliated Columnar 2) Non-Ciliated Columnar
 3) Ciliated pseudo – stratified 4) Non- ciliated pseudo – stratified
- 141. Upward flow of water through the Xylem in plants can acheive fairly high rates upto**
 1) 15cms/hour 2) 15mm/hour 3) 15 meters/hour 4) 25 meters /hour

142.



From the diagram given above A,B,C,D are respectively, occupied by

- 1) Duodenum, Duct from gall bladder, Pancreas, Gall bladder.
- 2) Duodenum, Gall bladder, Pancreas, Duct from gall bladder.
- 3) Pancreas, Duct from gall bladder, Duodenum, Gall bladder.
- 4) Pancreas, Hepato – Pancreatic duct, Duodenum, Gall bladder.

143. The chromosomes in which centromere is situated close to its end

- 1) Acrocentric
- 2) Telocentric
- 3) Metacentric
- 4) Submetacentric

144. A chronic disorder in which alveolar walls are damaged due to which respiratory surface is decreased. Identify it

- 1) Bronchitis
- 2) Asthma
- 3) Emphysema
- 4) None of the above

145. Which of the following hormone shows respiratory climatic

- 1) ABA
- 2) GA
- 3) Ethylene
- 4) cytokinins

146. Identify the wrong statement(s)

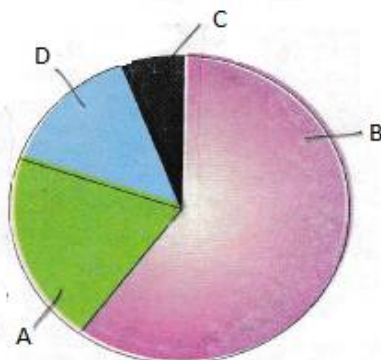
- A) Since the origin of life on earth, there were six episodes of mass extinction of species
- B) The current species extinction rates are many time faster than in the pre-human times
- C) Ecologists warn that if the present trends of extinction were to be continued, about half of all the species on earth might be wiped out within the next 100 years.
- D) Biodiversity hotspots could reduce the ongoing mass extinctions by about 30 percent

- 1) A,B
- 2) C,D
- 3) Only A
- 4) Only D

147. Cell A with $\pi = -15$ bars $P = 9$ bars, Cell B with $\pi = -10$ bars $P = 8$. bars The movement of water is from

- 1) Both direction
- 2) $A \rightarrow B$
- 3) $B \rightarrow A$
- 4) No movement

148. Following diagram refers to the relative contribution of Greenhouse gases to global warming. Study the diagram and answer.



A, B, C, D in the diagram are respectively, occupied by

- 1) $CH_4, CO_2, CFCs, N_2O$
- 2) $CO_2, CH_4, CFCs, N_2O$
- 3) $CH_4, CO_2, N_2O, CFCs$
- 4) $CFCs, CO_2, N_2O, CH_4$

149. Suppressed cotyledon present in maize is called

- 1) Scutellum
- 2) Epiblast
- 3) Plumule
- 4) Coleoptile

150. Volume of air that remains in the lungs after a normal expiration includes:

- 1) Inspiratory Reserve volume + Residual volume
- 2) Expiratory Reserve volume + Residual volume
- 3) Vital capacity + Residual volume
- 4) Expiratory Reserve volume + Tidal volume

151. Which of the would appear as the pioneer organisms on bare rocks

- 1) Mosses
- 2) Lichens
- 3) Liver worts
- 4) Green algal

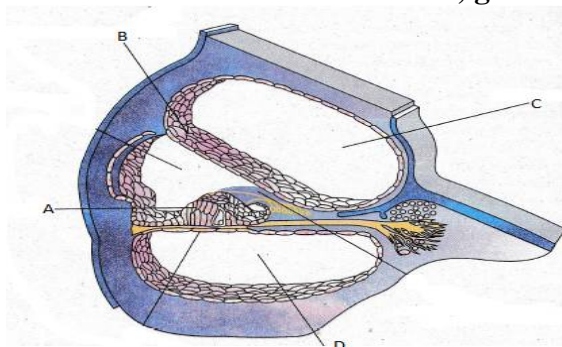
152. The disorder caused by decreased levels of Oestrogen in post-menopause women is

- 1) Osteoarthritis
- 2) Tetany
- 3) Osteoporosis
- 4) Myaesthesia gravis

153. Dual Function containing codon identifies the following aminoacid

- 1) Methionine
- 2) Glycine
- 3) serine
- 4) proline

154. Following diagram refers to the sectional view of cochlea, go through it carefully.



From the diagram A, B, C, D are, respectively, occupied by

- 1) Organ of corti, Basilar membrane, Scala vestibuli, Scala tympani.
- 2) Organ of corti, Reissner's membrane, Scala vestibuli, Scala tympani.
- 3) Reissner's membrane, Tectorial membrane, Scala vestibuli, Scala tympani.
- 4) Organ of corti, tectorial membrane, Scala vestibuli, Scala tympani.

155. Which of the following is correct match

- 1) Sonalika – Rice
- 2) Jaya – Wheat
- 3) Himgiri – Wheat
- 4) Atlas66 – maize

156. Read the following statements

S_1 :Fovea is a thinned out – portion of retina where only rods are densely packed

S_2 :Fovea is a point of greatest visual acuity

Select the correct statement(s)

- 1) both S_1 & S_2
- 2) Only S_1
- 3) Only S_2
- 4) None

157. Maize leads to presistance to maize stem borers due to

- 1) Low aspartic, acid, Low nitrogen and sugar content
- 2) High aspartic, high nitrogen and sugar
- 3) High aspartic low nitrogen and sugar
- 4) High aspartic, low nitrogen and high sugar

158. Match the items given in Column I with those in Column II, and select correct option given below

Column I

- a. Ophrys
- b. Calotropis
- c. Monarch butterfly
- d. Warblers

Column II

- i. Cardiac glycoside
- ii. Poisonous weed
- iii. Sexual deceit
- iv. Resource Partitioning

- | | a | b | c | d |
|----|-----|-----|-----|----|
| 1) | iii | i | ii | iv |
| 2) | i | iii | iv | ii |
| 3) | ii | i | iii | iv |
| 4) | iv | iii | ii | i |

159. Number of characters related to xerophyte adaptations containing *Opuntia*
- a. Stomata opened during day time b. CAM Pathway
 c. Leaves are absent – modified in to spines d. flattened stems
- 1) abc correct 2) all are correct 3) acd correct 4) bcd are correct

160. Read the following statements carefully

- A) Heroin commonly called crack is chemically diacetylmorphine
 B) Heroin is obtained form latex of poppy plant
 C) The drug which is obtained from *Erythroxylen coca* interferes with neuro – transmitter dopamine
 D) Cannabinoids effect cardio – vascular system of the human body

Select the correct combinations from the above

- 1) All the above 2) A,B,C 3) B,D 4) B,C,D
161. The *Avena* curvature is used for bioassay of
- 1) ABA 2) 1AA 3) Cytotoknin 4) GA_3

162. Vector control Research Centre

- 1) New Delhi 2) Lucknow
 3) Puducherry 4) Mumbai

163. S phase of its cell cycle, as compared to gamete of the same species has

- 1) same number of chromosomes but twice the amount of DNA
 2) Twice the number of chromosomes and four times the amount DNA
 3) Twice the number of chromosomes and Twice the amount of DNA
 4) Four times the number of chromosomes and Twice the amount of DNA

164. Match Column I with Column II

Column I

- A) ZW – ZZ type
 B) ZO – ZZ type
 C) XX – XY type
 D) XX – XO type

Column II

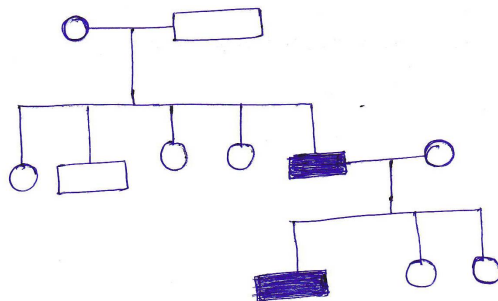
- i) Grass hoppers
 ii) *Drosophila*
 iii) *Fumea* Moths
 iv) Birds

- | | A | B | C | D |
|----|-----|-----|-----|----|
| 1) | iv | iii | ii | i |
| 2) | iii | iv | ii | i |
| 3) | ii | iii | iv | i |
| 4) | i | iv | iii | ii |

165. The term ecosystem was coined by

- 1) E. Warming 2) Odum 3) Misra 4) A.G & Tansley

166. In the Chart, mutant trait is shaded black.



The Gene responsible for the trait is:

- 1) dominant, sex linked 2) recessive, autosomal
 3) dominant, autosomal 4) recessive, sex limited
167. Which of the following is not included in periderm.
- 1) Phellem 2) Late wood
 3) phelloderm 4) cork cambium

168. What is the basis of DNA fingerprinting?

- 1) Relative proportions of purines & pyrimidines in DNA
- 2) Satellite DNA occurring as highly repeated short DNA segments
- 3) Relative amount of DNA in the ridges & grooves of fingerprints
- 4) All the above

169. Endosperm is n and $3n$ respectively in

- 1) Dicots, Monocots
- 2) Bryophyta, Pteridophyta
- 3) Gymnosperms, Dicots
- 4) Pteridophytes, Gymnosperms

170. The region of biosphere reserve where limited human activity is allowed for research, education and resource use strategies

- 1) Core Zone
- 2) Transition Zone
- 3) Buffer Zone
- 4) Restoration Zone

171. Which of the following RNA's should be most abundant in animal cell

- 1) SnRNA
- 2) mRNA
- 3) collagen
- 4) Rrna

172. Identify the animal which isn't a homeotherm:

- 1) *Ornithorhynchus*
- 2) *Aptenodytes*
- 3) *Ichthyophis*
- 4) *Neophron*

173. If there are 999 bases in an RNA that codes for a protein with 333 Amino acids and the base at position 901 is deleted such that the length of the RNA becomes 998 bases, how many codons will be altered

- 1) 333
- 2) 666
- 3) 11
- 4) 33

174. Which of the following animal possess file-like rasping organ in its mouth?

- 1) *Pleurobranchia*
- 2) *Alplysia*
- 3) *Pentaceros*
- 4) *Lepisma*

175. What is the criteria for DNA fragments movement on agarose gel during gel eletrophoresis

- 1) The smaller the fragment size, the farther it moves
- 2) Negatively charged fragments do not move
- 3) The larger the fragment the farther it moves
- 4) Positively charged fragments move to farther end

176. Study the following statements, carefully

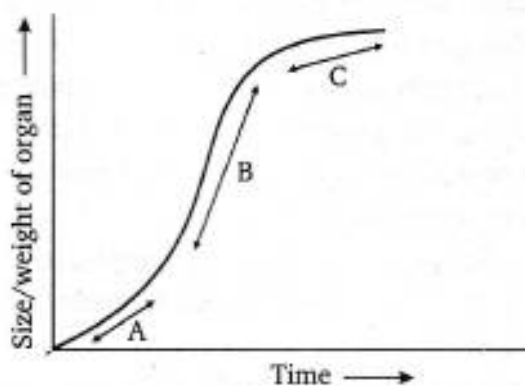
S_1 : Thermoregulation is energetically expensive for many organisms, especially the large animals

S_2 : Small animals have a smaller surface area of body relative to their body volume

Select the correct statement(s) from the above

- 1) both S_1 & S_2
- 2) Only S_1
- 3) Only S_2
- 4) None

177. Observe the sigmoid curve given below and identify the phases A,B and C:



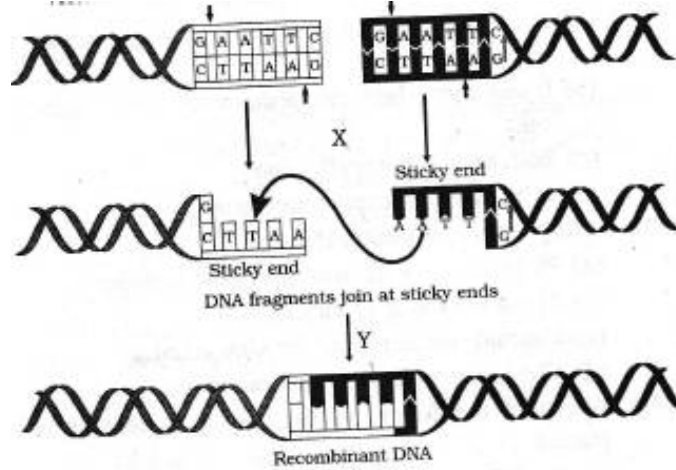
- 1) A= Initial slow growth, B= Rapid growth, C=Phase of growth during limited nutrient supply
- 2) A= Rapid growth, B= Initial slow growth, C=Phase of growth during limited nutrient supply
- 3) A=Lag Phase, B=Stationary phase, C= Exponential phase
- 4) A= Exponential phase, B=Stationary phase, C=Lag phase

178. Select the correct statements about Nutrient Cycles

- A) The amount of nutrients, present in the soil at any given time is called 'Standing Crop'
- B) The function of the 'reservoir' (of different nutrient cycles) is to meet with the deficit which occurs due to imbalance in the rate of influx and efflux.
- c) Atmospheric inputs of phosphorus through rainfall are equal to carbon inputs
- D) Gaseous exchanges of phosphorus between organism and environment are negligible

- 1) B,D 2) C,D 3) A,B 4) A,C

179. Identify the enzyme X and Y?



- 1) X= RNA – ligase, Y= DNA ligase 2) X= *Bam* HI, Y=RNA-ligase
 3) X=*Eco* RI, Y=DNA-ligase 4) X = *Hind* III , Y= RNA – ligase

180. Study the following statements about Medical Termination of Pregnancy (Amendment) Act, and identify the correct statement(s) .

- 1) It was amended by the Government of India in 2017
- 2) According to this Act, a pregnancy may be terminated on certain grounds within the first 12 Weeks of pregnancy on the opinion of one registered medical practitioner.
- 3) According to this Act, if the pregnancy has lasted between 12 weeks to 24 weeks, the opinion of two registered medical practitioners must be sought for the termination of pregnancy on certain grounds.
- 4) All the above.